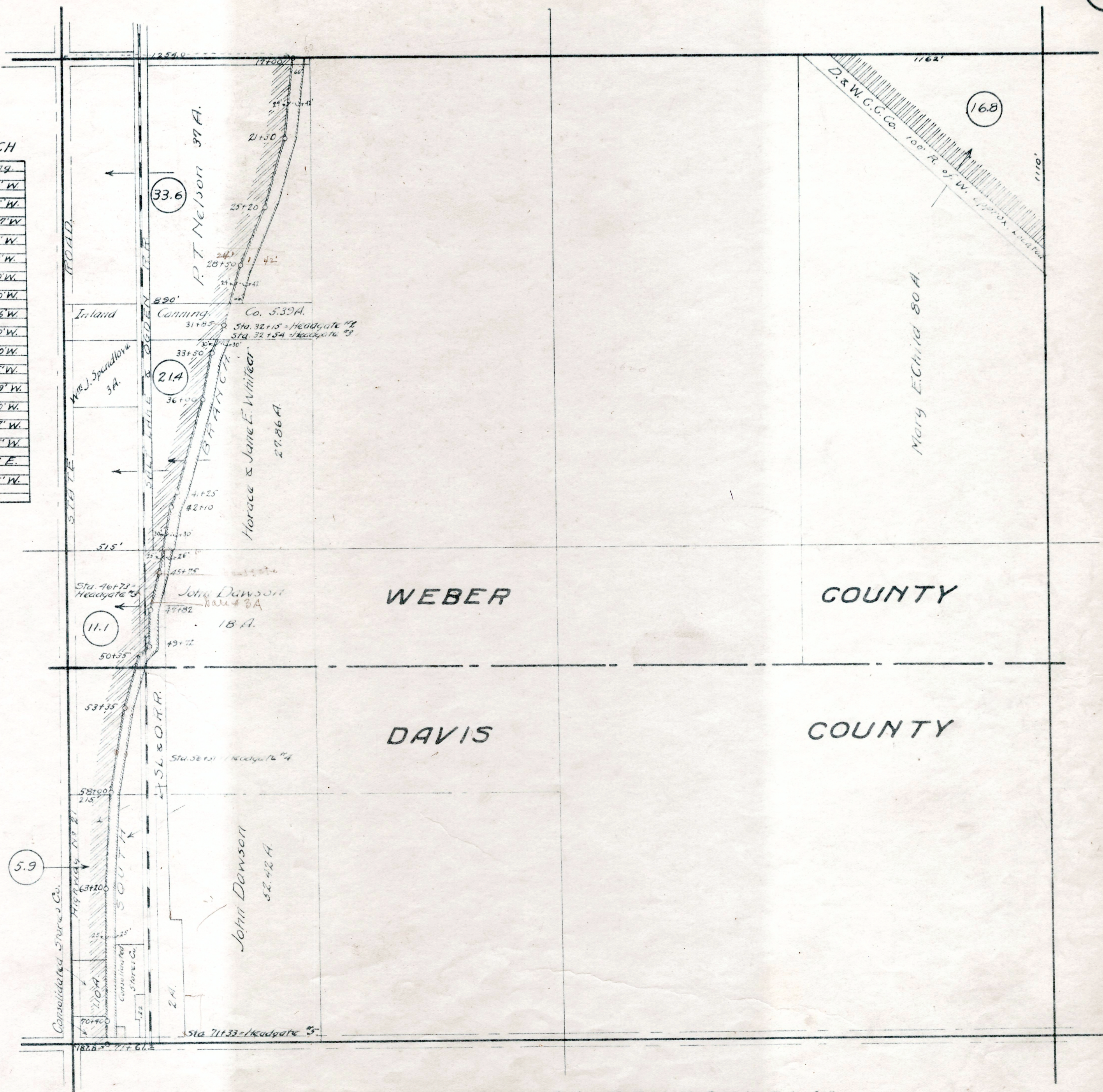


SOUTH BRANCH

Station	Bearing
15+40	57°-15' W.
21+30	516°-15' W.
25+20	523°-17' W.
28+50	516°-18' W.
31+85	524°-32' W.
33+50	511°-30' W.
36+00	515°-30' W.
41+25	524°-06' W.
42+10	511°-00' W.
45+75	513°-30' W.
47+82	50°-55' W.
49+72	559°-49' W.
50+35	515°-40' W.
53+35	59°-47' W.
58+00	52°-45' W.
63+20	50°-12' E.
70+40	50°-05' W.
76+20	



WEBER

COUNTY

DAVIS

COUNTY

SECTION 24-T.5N.R.2W. S.L.M.